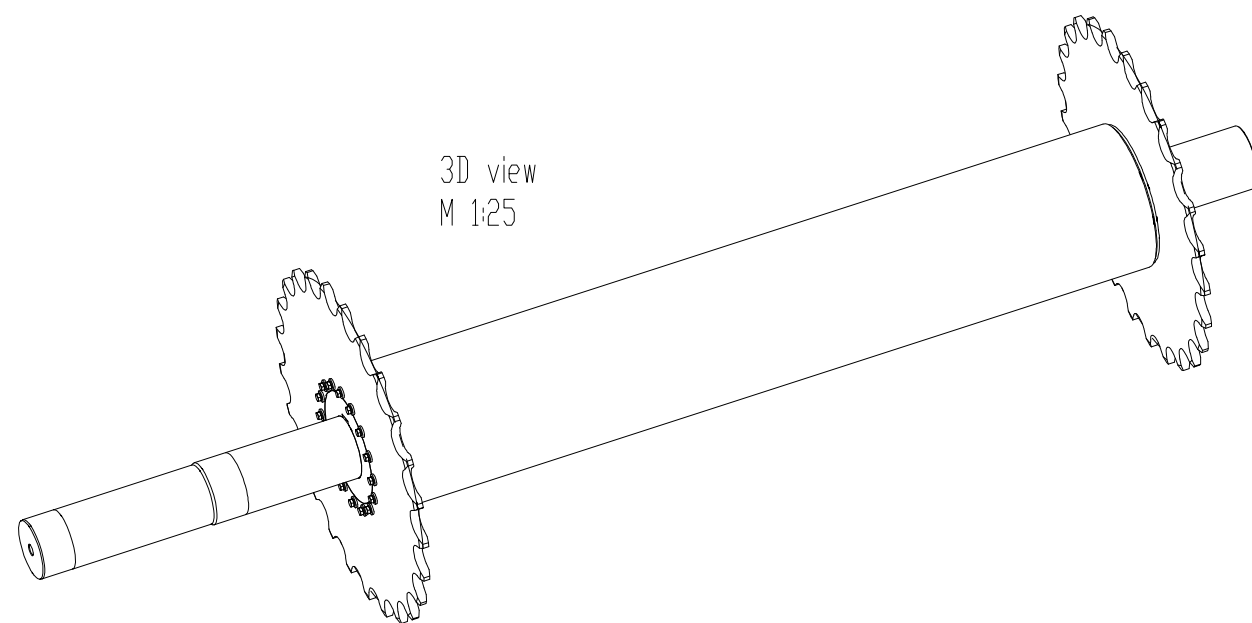
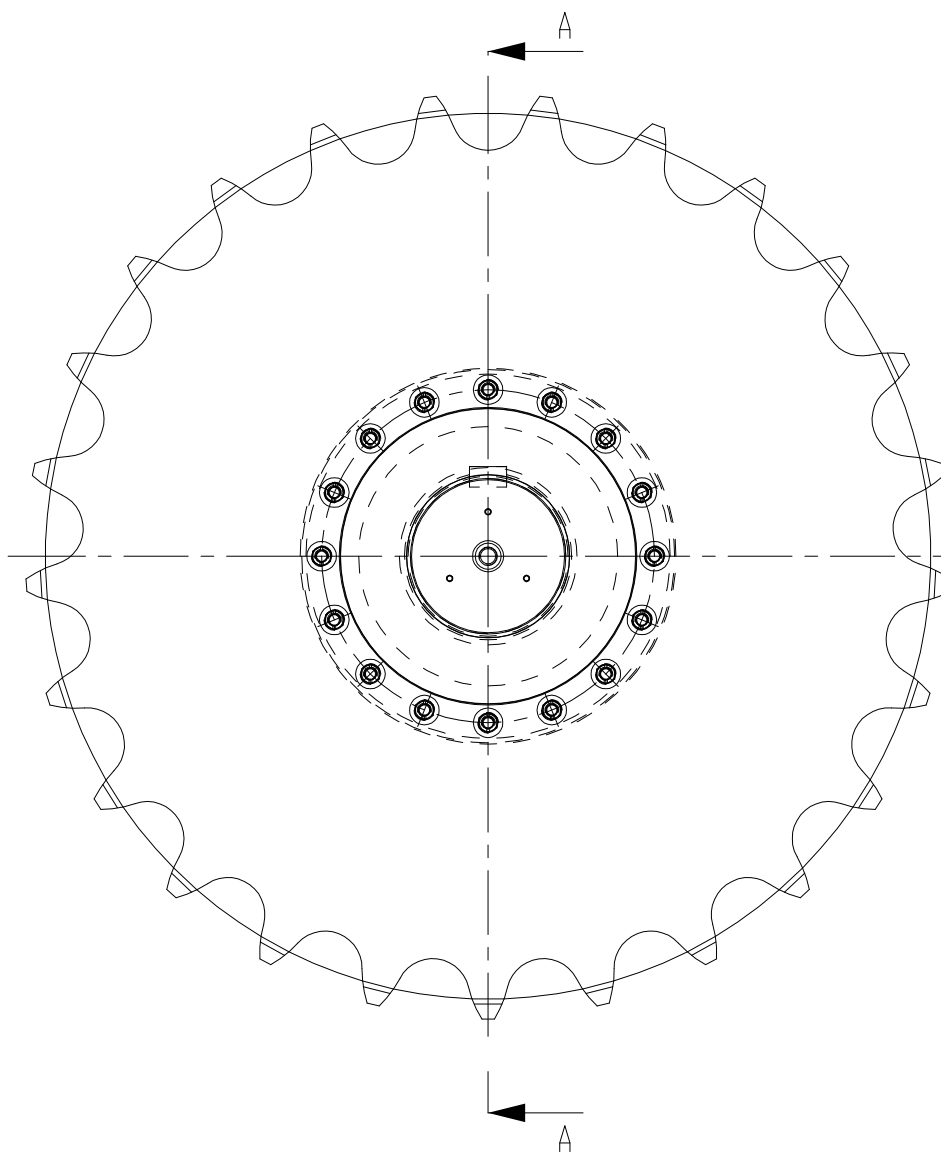
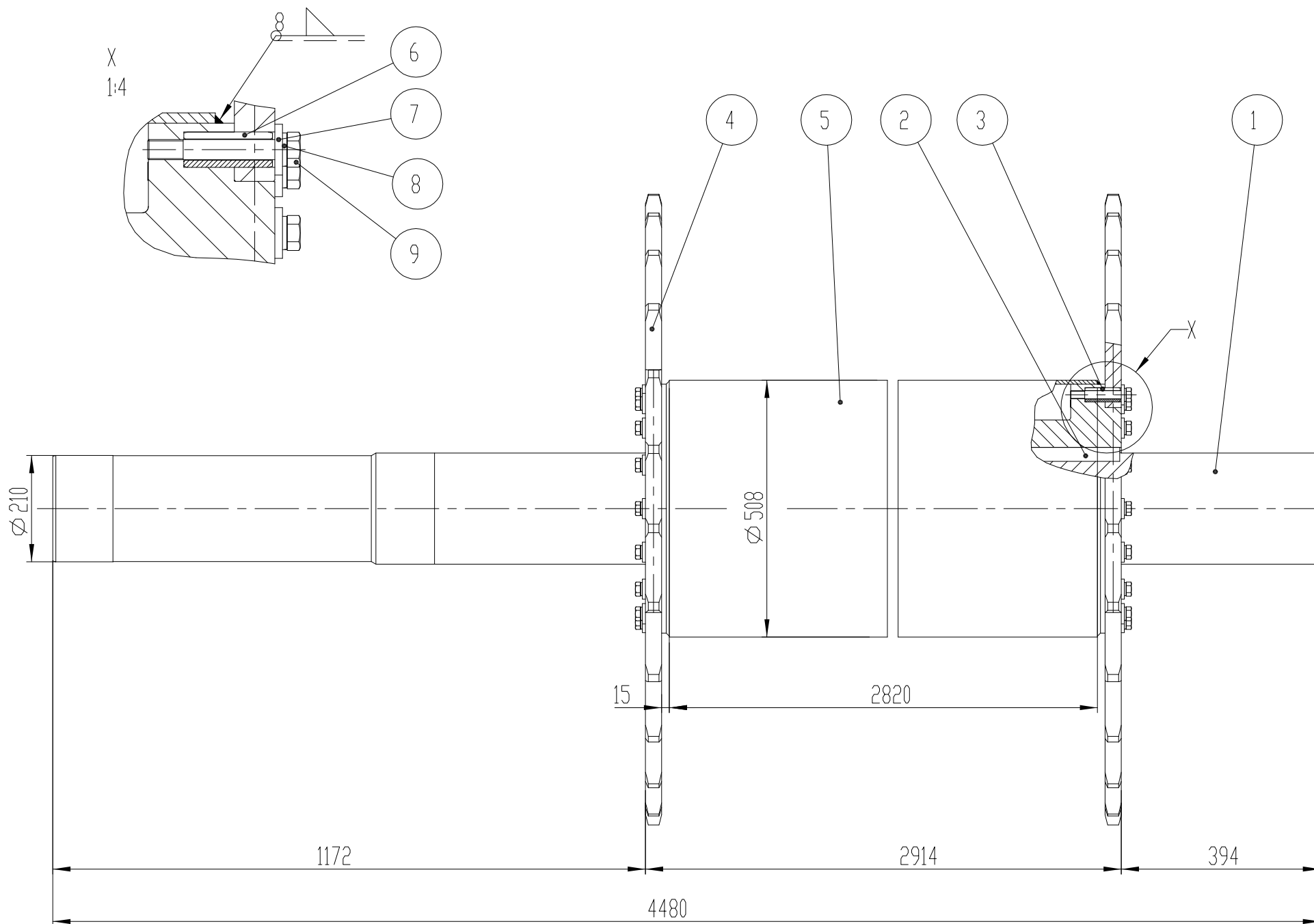


DEVIATIONS FOR DIMENSIONS WITHOUT TOLERANCES		
WELDING ENISO 13920 grade: B	LIN. & ANG. TOL. ENISO 22768-1 grade: m	GEOMETRICAL TOL. ENISO 22768-2 grade: K



3D view
M 1:25

9	Hexagon head screw M16x110	32	DIN 931	12.9	0.2	
8	Washer A16	32	DIN 127		0.0	
7	Washer 17	32	DIN 7349		0.0	
6	Grooved pin $\varnothing 28 \times 70$ mm	32	DIN 1481		0.2	
5	$\varnothing 508 \times 8$ L=2820 mm	1		St 37-3	278.2	
4	Chain drive z=25 L=150	2	CO-129-66		228.9	
3	Hub	2	CO-539-66	St 37-3	144.3	
2	Parallel key 50x28x190	2	DIN 6885 A		2.0	
1	Shaft	1	CO-439-66	42CrMo4	1460.2	

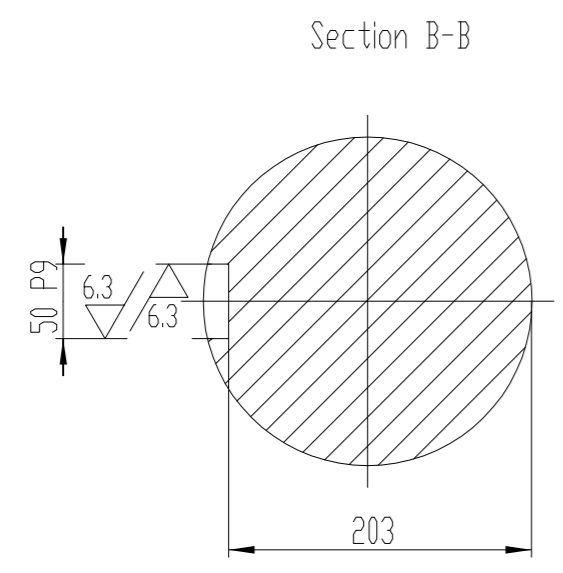
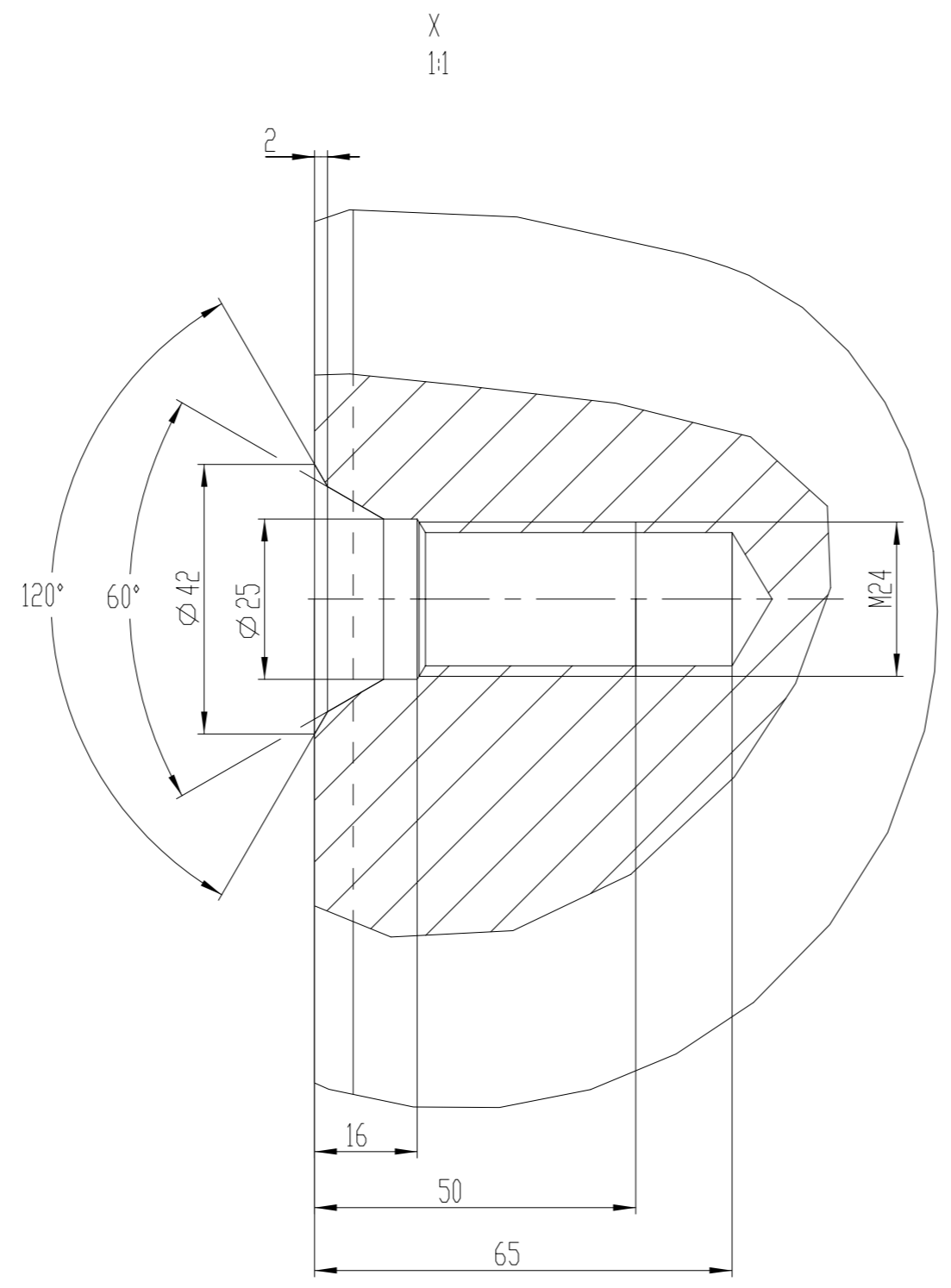
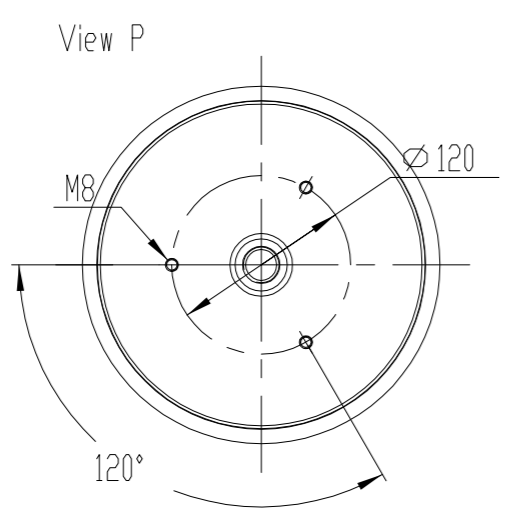
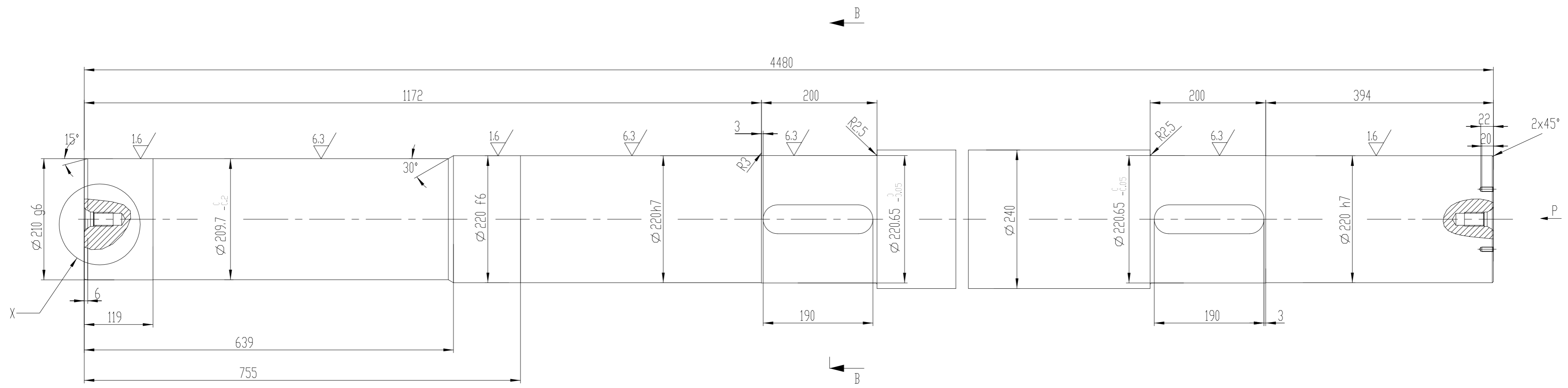
Itemref	Title/Name, designation, dimension, etc	Quantity	Drawing No.	material	mass (kg)	Note
---------	---	----------	-------------	----------	-----------	------

Designed by	30-May-07. Seleznev	Date		Mass (kg)	2047.0	
Checked by	30-May-07. Bazin			Sheet	1/1	

Scale	1:10	TITLE	Shaft - structure		
DRAWING_NUMBER				Edition	
CO-329-66					

12.5 / 6.3 / 1.6

DEVIATIONS FOR DIMENSIONS WITHOUT TOLERANCES		
WELDING ENISO 13920	LIN. & ANG. TOL. ENISO 22768-1	GEOMETRICAL TOL. ENISO 22768-2
grade: B	grade: m	grade: K

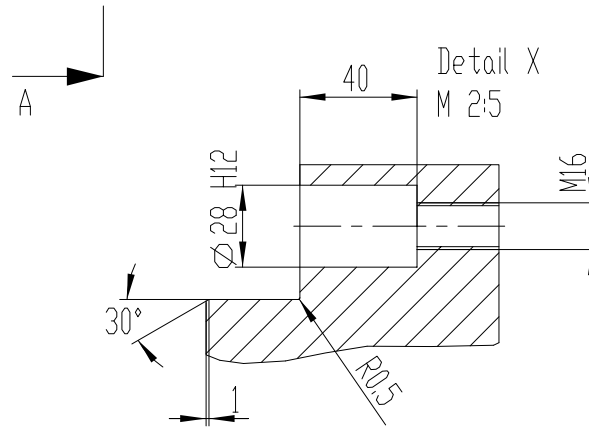
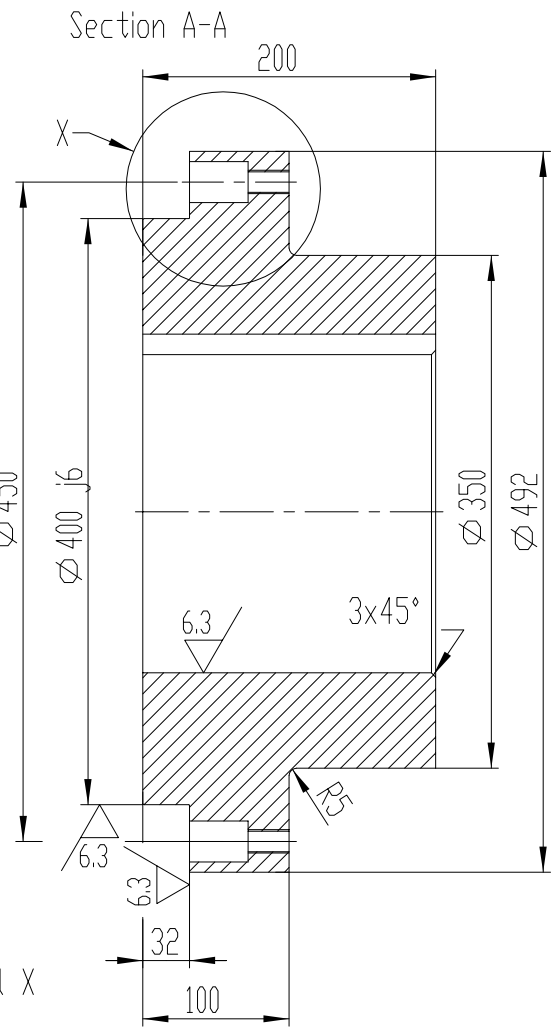
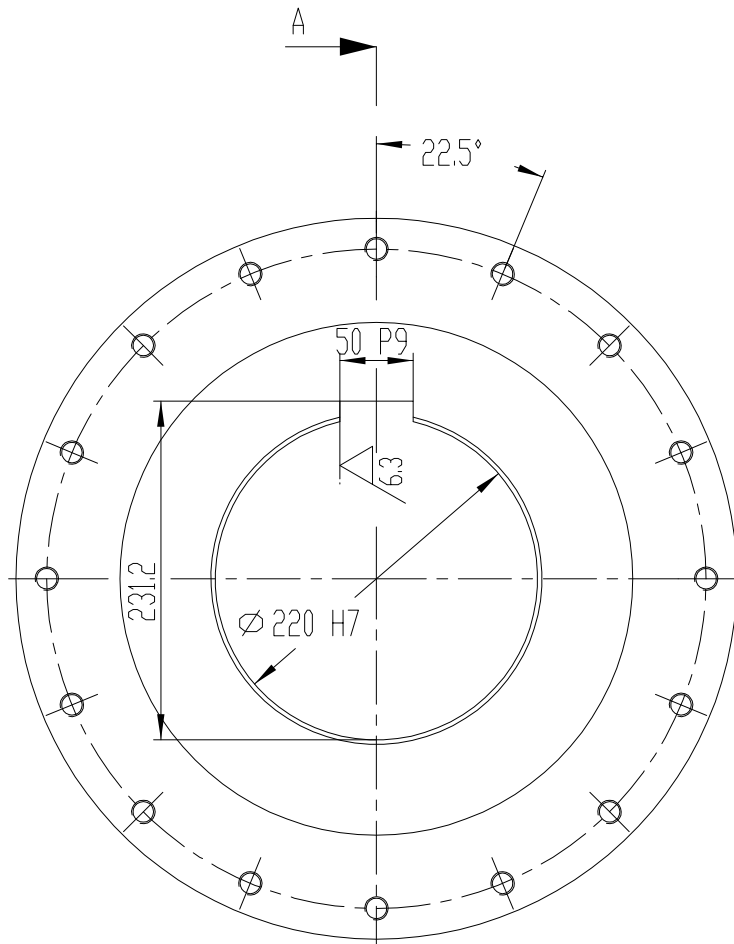


Heat treated to 800-1000 N/mm2

Itemref	Title/Name, designation, dimension, etc	Quantity	Drawing No.	material	mass (kg)	Note
	Ø240 L=4480mm			42CrMo4	1460.2	
	Date			Mass (kg)		
	Designed by 30-May-07. Seleznev			1460.2		
	Checked by 30-May-07. Bazin					
				Sheet	1/1	
Scale	TITLE					
1:5	Shaft					
	DRAWING_NUMBER	Edition				
	CO-439-66					

12.5 / 6.3

DEVIATIONS FOR DIMENSIONS WITHOUT TOLERANCES		
WELDING ENISO 13920 grade: B	LIN. & ANG. TOL. ENISO 22768-1 grade: m	GEOMETRICAL TOL. ENISO 22768-2 grade: K



At manufacture of hubs, pay attention that grooves for parallel keys are in same axis.

Itemref	PI.200x0492	Quantity		Drawing No.	St 37-3	material	144.3	Note
	Date			Mass (kg)				
Designed by	30-May-07.	V. Seleznev		144.3				
Checked by	30-May-08.	S. Bazin		Sheet	1/1			
Scale	TITLE							
1:5	Hub							
DRAWING_NUMBER							Edition	
CO-539-66								